



CAPSTAY

PRODUCT GUIDE

Product production partners

DIVISION	Technical cooperation	Manufacturer	Responsible seller
COMPANY NAME	CHEONGHYU CO.,LTD.	BELOVECOSMETIC	SAGAFACE CO.,LTD.
ADRESS	66, Chungmin-ro, Songpa-gu, Seoul, Republic of Korea	45, Yuchonsandan-ro, Geumwang-eup, Eumseong-gun, Chungcheongbuk-do, Republic of Korea	6, Magokjungang 5-ro, Gangseo-gu, Seoul, Republic of Korea



Product specification and capacity



Mask Pack

DIVISION	Hyaluronic-Acid Mask	Squalane Mask	Aloe Greentea Mask	Vitamin Mask	Pure Gold Shining Ampoule Mask	Shea Butter Mask
SIZE Horizontal Vertical Height	14.2 * 4 * 20.3	14.2 * 4 * 20.3	12.3 * 3.5 * 19	12.3 * 3.5 * 19	12.3 * 3.5 * 19	12.3 * 3.5 * 19
Weight	30 g	30 g	25 g	25 g	25 g	25 g

Skin & Emulsion

DIVISION	Women Skin Softner	Women Skin Emulsion	HOMME Skin Softner	HOMME Skin Emulsion
SIZE Horizontal Vertical Height	4.5 * 4.5 * 19	4.5 * 4.5 * 19	4.5 * 4.5 * 18	4.5 * 4.5 * 18
Weight	120 g	120 g	120 g	120 g

All – IN - ONE

구 분	Multi-intensive Boosting Essence	Multi-intensive Rich Essence	HOMME All-IN-ONE EMULSION
DIVISION	5 * 5 * 18	5 * 5 * 18	4.5 * 4.5 * 18
SIZE Horizontal Vertical Height	100 g	100 g	120 g

Product quantity



Mask Pack

DIVISION	Hyaluronic-Acid Mask	Squalane Mask	Aloe Greentea Mask	Vitamin Mask	Pure Gold Shining Ampoule Mask	Shea Butter Mask
1 case	10 EA	10 EA	10 EA	10 EA	10 EA	10 EA
1 box	400 EA	400 EA	500 EA	500 EA	500 EA	500 EA

Skin & Emulsion

DIVISION	Women Skin Softner	Women Skin Emulsion	HOMME Skin Softner	HOMME Skin Emulsion
1 case	1 CASE	1 CASE	1 CASE	1 CASE
1 box	50 CASE	50 CASE	50 CASE	50 CASE

All – IN - ONE

DIVISION	Multi intensive Boosting Essence	Multi intensive Rich Essence	HOMME ALL-IN-ONE Emulsion
1 case	1 CASE	1 CASE	1 CASE
1 box	80 CASE	80 CASE	50 CASE

Solutions by product



High Concentration Solution

Environmentally natural Tencel sheet
The best ingredients for moist skin

Mask Pack



Skin Outside Solution

Activating the outer layer of the skin barrier
Re-generating the inner layer of the skin barrier

Skin & Emulsion



Only One Solution

Adjusting the oil and water balance
in one Stable and refine skin

ALL - IN - ONE



The seat of the capstay is beautiful
Knowing cosmetics, you can see your skin.



The capstay, What solution do you have?

The last layer of skin in direct contact with the external environment
Activates the skin barrier and covers the most sensitive outer layer first.
Replenish oil-based ingredients to the skin and increase the adhesion
retention of ingredients
It softens, shines, glows, and moisturizes to keep your skin healthy.

Skin imbalances and blemishes.

Healthy skin has a smooth, shiny, moist and elastic surface.
However, as skin aging progresses, an imbalance of metabolism occurs,
especially in the stratum corneum.
Various defects on the surface of the skin due to lack of moisture
(20% optimal) It starts to appear.

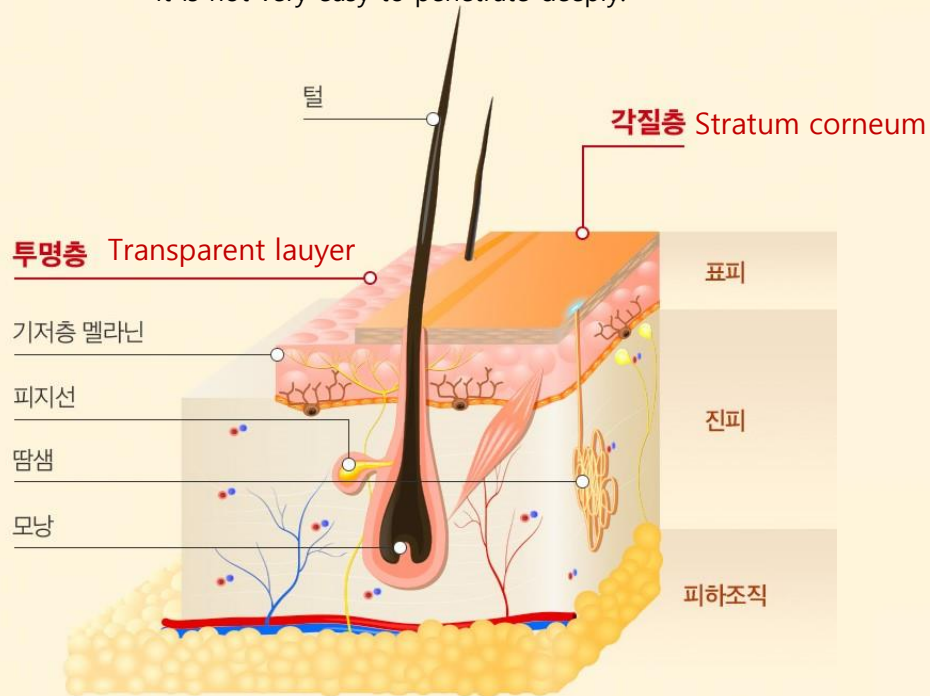
Eco-friendly sheet paper and premium highly concentrated ampoule.

Sheet paper and ampoules that meet directly on the skin.
For sensitive skin, eco-friendly material made from eucalyptus tree extract.
The smooth fiber structure does not irritate the skin and is effective for sensitive baby skin.
For the health of the skin, the ampoule's good ingredients are highly concentrated to
increase the effect. Although it is highly concentrated, it is not sticky.

Mask Pack Solution

High Concentration Solution

Outer layer reinforcement solution using
CAPSTAY highly concentrated ampoule.
The ingredients of various cosmetics are
applied to the inner layer of the skin.
It is not very easy to penetrate deeply.



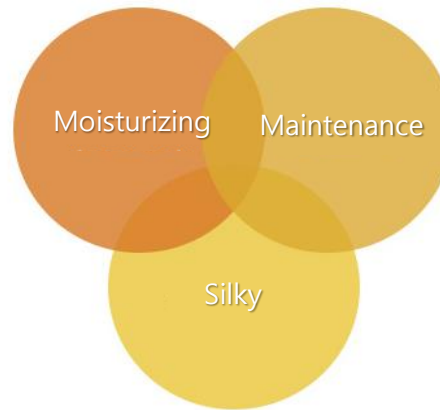
The primary key to CAPSTAY skin care is
Keeps moisturizing ingredients in close contact with the outer
layer of the skin [transparent layer of the stratum corneum],
Various problems are covered by a new concept
It is a skin protection management solution.



Perfect

In 3 Moisturizing
Obvius
Cover Skin&Basic Care
capstay

오브비우스 커버스킨 베이직케어 보습전문 화장품
캡스테이



- Moisturizing

CAPSTAY Sheet Mask contains the ingredients that has moisture absorbing power which maximizes its moisturizing by increase of adherency.

- Maintenance

CAPSTAY Sheet Mask contains the ingredients that has high moisture absorption, retention and oil that has the excellent moisturizing effect to maximize the feeling of maintenance.

- Silky

CAPSTAY Sheet Mask creates the softy gloss by maintaining its own silkiness without any greasy or sticky feeling on the skin.

CAPSTAY



Mask pack sheet function

When the mask sheet is in close contact with the face, it is itself blocked from outside air.

It has the basic effect of increasing skin temperature-enhancing blood circulation-softening the skin.

By adding various moisturizing ingredients to the mask sheet, This is an important step in skin care.

Differentiated sheet paper

WHAT IS TENCEL ?

Made from eucalyptus tree extract
It is an eco-friendly material.



EFFECTS of Tencel Sheet.

Tencel has a thin sheet, so the moisture content, adhesion,
High absorption rate of moisturizing ingredients and fiber structure
Because it is smooth and does not irritate the skin
It is also effective for sensitive baby skin.



CAPSTAY mask sheet is an eco-friendly fabric, tencel long fiber using 100% natural material.

Tencel is a pure cellulose-based fiber, made through an eco-friendly manufacturing process,
and is a nature-oriented material that returns to nature after disposal.

TENCEL's thin sheet provides excellent adhesion and high absorption rate of moisturizing ingredients and excellent retention,
providing excellent skin moisturizing intensive care.

As a natural material, it has excellent elasticity, so there is no skin tension caused by the material, it suppresses drying and
keeps the skin moist for a long time.

Mask pack product introduction



Hyaluronic-Acid Mask

- Conditioning
- Moisture Soothing
- Moisturizing

Hyaluronic Acid, Rosehip Oil

Hyaluronic acid has the ability to contain 1000 times more than its own moisture and has the power to attract moisture in the air.

Hyaluronic-Acid Mask helps in preventing the skin aging that increases the chance of wrinkles (loss of dryness, tension and elasticity) due to the lack of moisture

Rosehip Fruit Oil has 20 times more vitamin C than lemon, which can help to vitalize and activate the skin

Mask pack product introduction



Squalane Mask

Moisture Soothing
Tone Up
Moisturizing

Squalne, Rosehip Oil

It prevents the evaporation of the skin and keeps the moisture to protect the keratin phenomenon to make the skin supple.

As the particles are fine, its high adhesion and retention makes skin shiny and supple when it is used on the skin

Rosehip fruit oil makes skin texture shiny and as it contains a large amount of Vitamin C, it is excellent for the skin activity and very effective for care of skin trouble and pigmentation

Mask pack product introduction



Aloe Green Tea Mask

- Skin Soothing
- Vitality
- Moisturizing

Aloe Leaves, Green Tea Extract

Aloe leaf extract is excellent in soothing skin and has a very special moisturizing effect in the rich moisture feeling.

Green tea extract is the best skin soothing ingredient and it has an anti-oxidative reaction which is very effective for skin troubles

Mask pack product introduction



Vitamin Mask

- Vitality
- Tone Up
- Moisturizing

Vitamin (E), Rosehip Oil

Vitamin Mask strengthens the skin barrier and increase moisture retention through its excellent moisturizing power, so the skin does not lose moisture and make the skin shiny and supple.

Vitamin E (Tocopherol)

It protects skin cell membranes from external invasion and prevents damage to help vitality of the skin and makes the skin healthy through its excellent adhesion, high moisturizing power and anti-oxidative reaction

Rosehip fruit oil adds vitality to dull skins through its vitamin C (20 times more than lemon) and other vitamins

Mask pack product introduction



Pure Gold Shining Ampoule Mask

- Brilliance
- Moisture Soothing
- Elastin

Pure Gold, Jojoba Oil

It has good affinity with the skin and contains hyaluronic acid and jojoba seed oil which is effective for moisturizing, removing sebum and improving clear skin.

Moisturizing ingredients such as hyaluronic acid and jojoba seed oil have a great moisturizing effect on rough and dry skin and the oil has good affinity with the skin that it is not only moisturizing but also effective for removing sebum and skin improvement

Mask pack product introduction



Shea Butter Mask

- Brilliance
- Moisture Soothing
- Elastin

Shea Butter, Jojoba Oil

It is a vegetable oil that grows in Africa and other places and is excellent for high moisturizing and skin vitality.

In addition to shea butter, hyaluronic acid is extremely effective in containing up to 1000 times its own weight Jojoba oil adheres well to the skin and is very good in moisturizing effect and when applied evenly on where there are a lot of sebum, it is excellent to remove them

Mask pack product ingredients



Hyaluronic-Acid Mask

Water, Sodium Hyaluronate, Glycerin, Butylene Glycol, Rosa Canina Fruit Oil, Cetearyl Alcohol, Stearic Acid, Glyceryl Stearate, Propylene Glycol, 1,2-Hexanediol, Chamomilla Recutita (Matricaria) Extract, Pinus Densiflora Leaf Extract, Centella Asiatica Extract, Rosmarinus Officinalis (Rosemary) Extract, Lavandula Angustifolia (Lavender) Extract, Carbomer, Triethanolamine, Allantoin, Panthenol, Dimethicone, Disodium EDTA, Fragrance

Squalane Mask

Water, Squalane, Glycerin, Butylene Glycol, Sodium Hyaluronate, Rose Canina Fruit Oil, Cetearyl Alcohol, Stearic Acid Glyceryl Stearate, Propylene Glycol, 1,2-Hexanediol, Chamomilla Recutita (Matricaria) Extract, Pinus Densiflora Leaf Extract, Centella Asiatica Extract, Rosmarinus Officinalis (Rosemary) Extract, Lavandula Angustifolia (Lavender) Extract, Carbomer, Triethanolamine, Allantoin, Panthenol, Dimethicone, Disodium EDTA, Fragrance

Aloe Greentea Mask

Water, Glycerin, Butylene Glycol, Sodium Hyaluronate, Aloe Barbadensis Leaf Extract, Simmondsia Chinensis (Jojoba) Seed Oil, Cetearyl Alcohol, Stearic Acid Glyceryl Stearate, Propylene Glycol, 1,2-Hexanediol, Centella Asiatica Extract, Rosmarinus Officinalis (Rosemary) Extract, Lavandula Angustifolia (Lavender) Extract, Carbomer, Triethanolamine, Allantoin, Panthenol, Dimethicone, Disodium EDTA, Fragrance

Vitamin Mask

Water, Glycerin, Butylene Glycol, Sodium Hyaluronate, , Rose Canina Fruit Oil, Tocopheryl Acetate, Cetearyl Alcohol, Stearic Acid Glyceryl Stearate, Propylene Glycol, 1,2-Hexanediol, Chamomilla Recutita (Matricaria) Extract, Pinus Densiflora Leaf Extract, Centella Asiatica Extract, Rosmarinus Officinalis (Rosemary) Extract, Lavandula Angustifolia (Lavender) Extract, Carbomer, Triethanolamine, Allantoin, Panthenol, Dimethicone, Disodium EDTA, Fragrance

Pure Gold Shining Ampoule Mask

Water, Glycerin, Butylene Glycol, Sodium Hyaluronate, Simmondsia Chinensis (Jojoba) Seed Oil, Cetearyl Alcohol, Stearic Acid Glyceryl Stearate, Propylene Glycol, 1,2-Hexanediol, Chamomilla Recutita (Matricaria) Extract, Pinus Densiflora Leaf Extract, Centella Asiatica Extract, Rosmarinus Officinalis (Rosemary) Extract, Lavandula Angustifolia (Lavender) Extract, Carbomer, Triethanolamine, Allantoin, Panthenol, Dimethicone, Disodium EDTA, Synthetic Fluorphlogopite, Tin Oxide, Iron Oxide Red, Titanium Dioxide, Fragrance

Shea Butter Mask

Water, Glycerin, Butylene Glycol, Sodium Hyaluronate, Butyrospermum Parkii (Shea) Butter, Simmondsia Chinensis (Jojoba) Seed Oil, Cetearyl Alcohol, Stearic Acid Glyceryl Stearate, Propylene Glycol, 1,2-Hexanediol, Chamomilla Recutita (Matricaria) Extract, Pinus Densiflora Leaf Extract, Centella Asiatica Extract, Rosmarinus Officinalis (Rosemary) Extract, Lavandula Angustifolia (Lavender) Extract, Carbomer, Triethanolamine, Allantoin, Panthenol, Dimethicone, Disodium EDTA, Fragrance

Mask Pack User's Guide



STEP 1.

After cleansing, use lotion trim the skin.



STEP 2.

Essence mask except for eyes and mouth It fits closely to the shape of the face.



STEP 3.

After 15-20 minutes, stabilize the skin with a moist mask
Apply all-in-one multi-essence gently once.



STEP 4.

To get a strong moisturizing feeling with an
all-in-one essence Apply on face once more.

Mask Pack Korea Test Results

제 출 문

■ 시험명: 인체 피부 일차자극 시험

휴먼 피부임상시험센터는 ㈜티에스리에서 의뢰한 본 시험을 GCP (Good Clinical Practice) guideline, 식품의약품안전처(MFDS, Ministry of Food and Drug Safety)의 관련 규정 및 휴먼 피부임상시험센터 표준작업지침서(SOP)에 따라 성실히 수행하였으며, 다음과 같이 결과를 보고합니다.

2020년 04월 01일

시험기관장 : 휴먼 피부임상시험센터 대표이사

정희정 (인)

시험책임자 : 휴먼 피부임상시험센터 피부과전문의

홍원규 (인)



시험 결과 확인서

성적서 번호 : HM-200318-IR0001-CD54

접수일자 : 2020. 03.10

업체명 : ㈜티에스리

시험완료일자 : 2020. 03. 20

대표자 : 이태승

주소 : 서울시 송파구 중민로 66, 8층 F-8030호 (가든파이프 라이프관)

피부 테스트 완료

시험 결과			
시험항목	검사기준	검사결과	판정
피부점포에 의한 일차자극 테스트	*비교 참조	0.00	비자극

시험 방법: 피험자 등을 70% 에탄올로 닦아 낸 뒤 건조시키고, 시험 재품을 IQ Ultimate에 20μl 로딩하여 피부에 고정 한 후 24시간 동안 부착한다. 패치 제거 후 30분, 24시간, 48시간에 각각 일차 피부자극 유무를 피부과 전문의가 판정하였다.

● 최종보고서 참조 : HM-200318-IR0001-54

● G48(기업지원플러스)에서 성적서 위변조 확인이 가능합니다.

● 비교:

피부 자극 지수	자극성 평가
0.00 ~ 0.25	비(무) 자극성
0.26 ~ 1.00	약한 자극성
1.01 ~ 2.50	중등도 자극성
2.51 ~ 4.00	강한 자극성

시험 책임자 : 홍원규(피부과 전문의)

2020년 4월 1일

휴먼 피부임상시험센터 대표이사

서울시 금천구 가산디지털1로 24, 대륭테크노타운 13차 1005호~1008호,

www.humantest.co.kr T : 070-5222-9663, F : 070-5222-9650



Skin & Emulsion Solution



The Starting of the skin trouble is that.

The outer layer of the skin gets damaged from the harmful environment outside, and the inner layer cause various troubles due to the aging of the skin tissue, and the moisture ability of the skin reduces.

SKIN OUTSIDE SOLUTION

Activates the outer layer barrier of the skin
and regenerates the inner layer of the skin

Prevents damage to the outer layer of the skin and
troubles to the inner layer, and it provides a solution with
a rich glow, moisture, and elasticity and healthy skin.



EWG Green Level Verification

100% safe ewg green grade all ingredients



It gives the moisture and nutrition of the skin at the same time due to the high safety of the skin and the high stability of the ingredient formulation, you can feel the affect of adhering to the skin with moist and smooth for light uses.



EWG Green Level

The U.S. environmental research group EWG (Environmental Working Group) classifies cosmetics ingredients based on harmfulness and 'Green' is the safest level.



Women's Skin & Emulsion



- | | | | |
|---------------------------|--------------------------------|-----------------------|----------------------|
| ✓ Regeneration | ✓ Moisturization | ✓ Soothing | ✓ Hypoallergenic |
| ✓ Reinforcement of layers | ✓ Reinforcement of elasticity | ✓ Self - Sustainment | ✓ Soft Glow |
| ✓ Prevention of oxidation | ✓ Protection | ✓ Wrinkle Improvement | ✓ Collagen Promotion |
| ✓ Water loss Prevention | ✓ Exfoliating skin Improvement | ✓ Water Supply | ✓ Antioxidant Effect |

Women's Skin & Emulsion



Fatty acids, vitamins

It has an antioxidant effect on the skin and facilitates the formation of protective membranes on the skin.



Adenosine

EWG 1st-grade natural extract helps cells in the skin, strengthens cell proliferation in the dermis layer to maintain skin elasticity, promotes collagen to prevent wrinkles, and enhances skin cell self-sustaining power to improve wrinkles.



Shea Butter

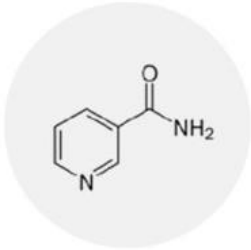
Smooth and gentle glow on the skin, giving health to the skin.



macadamia seed oil

It is rich in unsaturated fatty acids, which strengthens the skin barrier, and has excellent skin regeneration, moisturization, and soothing effects, which are also very effective in improving dead skin.

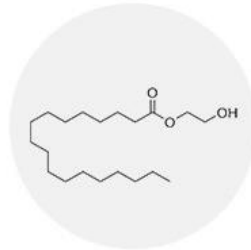
Women's Skin & Emulsion



NiacinMide

It keeps skin tone clear and clean, and helps in preventing moisture loss to prevent itchiness due to dryness.

It helps to activate the skin barrier and helps to take good care of the skin.



Glycerylstearate

It is a mild ingredient that comes from palm fruit and soybean oil that is not irritating to the skin and can be used for sensitive skin. It prevents overall loss of moisture on the skin and serves as a moisturizer and lubricant.



Rosemary leaf extract

It protects the skin from the active oxygen that causes skin aging, prevents oxidation, provides antioxidant effects and vitamins to the skin, and calms the skin



Centella Asiatica Extact

It has the ability to heal skin wounds, and it activates skin regeneration with the effect of regenerative anti-inflammatory antibacterial.

Men's Skin and Emulsion

Skin Softener for Men

Rough Skin of Men

Healing the skin with high moisture and adherence

It prevents skin trouble and damage caused by frequent shaving and adds ingredients that help in healing wounds to make skin more moisturized and soothing.



Men's Skin Emulsion

Oil of the skin

A long lasting feeling of clean moisture

It promotes the activation of skin cells for long periods of time for skin health, and completes clean skin for a long time with a man's neatness, refinement, subtle and refreshing scent.

Light and smooth adherence

By adjusting the oil and moisture balance through CAPSTAY's unique technology, the combination of the ingredients formulation is more stable, giving you a lighter and smoother adhesion.

Men's Skin and Emulsion

The rough skin of men
How to take care of it?

The outer layer of the skin
Skin problems arise from
ultraviolet rays, pollutants,
and harmful substances.

The inner layer of the skin
Due to aging, the foundation of the
stratum corneum is destroyed, and the
skin layers are not functioning properly,
causing various skin problems.

더욱 높은 보습력과 밀착감으로
이루어진 착한 전성분들로
피부의 진정과 치유를
더욱 촉진시켜 드립니다.



Men's Skin and Emulsion



Moisturizing

It prevents skin trouble and damage caused by frequent shaving and helps in healing wounds and cleanse skin texture, and also helps in stabilizing the skin by moisturizing.

Our daily lives

Half of the day consists of external activities. It makes your skin more moisturized and less oily that's tired due to the stuffy environment of outside and long hours of work.



Comparison of Men's & Women's Formulations



Toner



Good ingredients
Full of moisture
High enriched toner formulation

Emulsion



Oil and water of the skin
Balance control
Emulsion formulation



Moisturizing, nourishing,
softness and moist for
a long time



Toner



The formulation of refine
and clear toner for skin
texture care

Emulsion



Emulsion formulation
to fill the health on
men's skin barrier



Healing skin trouble and
turning oily skin into refine
men's skin

Men's and Women's Products



Women's Skin Softner



Women's Skin Emulsion



Men's Skin Softner



Men's Skin Emulsion

Ingredients for women and men products



Women Skin Softner

Water, Butylene Glycol, Niacinamide, Alcohol, Glycerin, Arginine, Caprylic/Capric Triglyceride, PEG-60 Hydrogenated Castor Oil, Caprylyl Glycol, Ethylhexylglycerin, Glyceryl Caprate, Carbomer, Inulin Lauryl Carbamate, Hydrogenated Lecithin, Butyrospermum Parkii (Shea) Butter, Adenosine, Macadamia Ternifolia Seed Oil, Sodium Palmitoyl Sarcosinate, Disodium EDTA, 1-2 Hexanediol, Sodium Hyaluronate, Centella Asiatica Extract, Scutellaria Baicalensis Root Extract, Polygonum Cuspidatum Root Extract, Glycyrrhiza Glabra (Licorice) Root Extract, Camellia Sinensis Leaf Extract, Rosmarinus Officinalis (Rosemary) Leaf Extract, Chamomilla Recutita (Matricaria) Flower Extract, Fragrance, Linalool



Women Skin Emulsion

Water, Glycerin, Butylene Glycol, Caprylic/Capric Triglyceride, Niacinamide, Cetyl Ethylhexanoate, Cyclopentasiloxane, Cetearyl Alcohol, Glyceryl Stearate, Polysorbate 60, Cyclohexasiloxane, Sorbitan Sesquioleate, PEG-100 Stearate, Dimethicone, Caprylyl Glycol, Carbomer, Ethylhexylglycerin, Arginine, Glyceryl Caprate, Inulin Lauryl Carbamate, Hydrogenated Lecithin, Adenosine, Butyrospermum Parkii (Shea) Butter, Macadamia Ternifolia Seed Oil, Disodium EDTA, Sodium Palmitoyl Sarcosinate, 1-2 Hexanediol, Tocopheryl Acetate, Sodium Hyaluronate, Centella Asiatica Extract, Scutellaria Baicalensis Root Extract, Polygonum Cuspidatum Root Extract, Glycyrrhiza Glabra (Licorice) Root Extract, Camellia Sinensis Leaf Extract, Rosmarinus Officinalis (Rosemary) Leaf Extract, Chamomilla Recutita (Matricaria) Flower Extract, Fragrance, Benzyl Salicylate, Hydroxycitronellal, Linalool



HOMME Skin Softner

Water, Alcohol, Glycerin, Butylene Glycol, Niacinamide, PEG-60 Hydrogenated Castor Oil, Caprylyl Glycol, Ethylhexylglycerin, Glyceryl Caprate, Adenosine, Sodium Citrate, Disodium EDTA, Citric Acid, Allantoin, 1-2-Hexanediol, Vitex Trifolia Fruit Extract, Urtica Dioica (Nettle) Extract, Thuja Occidentalis Leaf Extract, Simmondsia Chinensis (Jojoba) Seed Extract, Sambucus Nigra Fruit Extract, Persea Gratissima (Avocado) Fruit Extract, Juglans Regia (Walnut) Seed Extract, Hippophae Rhamnoides Fruit Extract, Cnidium Officinale Root Extract, Chrysanthemum Morifolium Flower Extract, Chamomilla Recutita (Matricaria) Flower Extract, Asarum Sieboldii Root Extract, Angelica Dahurica Root Extract, Aloe Barbadensis Leaf Extract, Ulmus Davidiana Root Extract, Oenothera Biennis (Evening Primrose) Flower Extract, Fragrance, Butylphenyl, Methylpropional, Linalool



HOMME Skin Emulsion

Water, Glycerin, Niacinamide, Cetyl Ethylhexanoate, Caprylic/Capric Triglyceride, Butylene Glycol, Cetearyl Alcohol, Glyceryl Stearate, Polysorbate 60, Vitis Vinifera (Grape) Seed Oil, Sorbitan Stearate, Dimethicone, PEG-100 Stearate, Carbomer, Caprylyl Glycol, Arginine, Ethylhexylglycerin, Glyceryl Caprate, Allantoin, Adenosine, Disodium EDTA, 1,2-Hexanediol, Vitex Trifolia Fruit Extract, Urtica Dioica (Nettle) Extract, Thuja Occidentalis Leaf Extract, Simmondsia Chinensis (Jojoba) Seed Extract, Sambucus Nigra Fruit Extract, Persea Gratissima (Avocado) Fruit Extract, Juglans Regia (Walnut) Seed Extract, Hippophae Rhamnoides Fruit Extract, Cnidium Officinale Root Extract, Chrysanthemum Morifolium Fruit Extract, Chamomilla Recutita (Matricaria) Flower Extract, Asarum Sieboldii Root Extract, Angelica Dahurica Root Extract, Aloe Barbadensis Leaf Extract, Ulmus Davidiana Root Extract, Pueraria Lobata Root Extract, Pinus Palustris Leaf Extract, Oenothera Biennis (Evening Primrose) Flower Extract, Fragrance, Butylphenyl, Methylpropional, Linalool

All-In-One Solution

ONLY ONE SOLUTION

Skin lotion essence
complete the skin by only one solution

It heals the wounds on the outer and inner layer of the skin and by the ingredients of green level of EWG, gives the solution to the skin with soothing, moisturizing, adhering and promoting.

The Starting of the skin trouble is that..

The outer layer of the skin gets damaged from the harmful environment outside, and the inner layer cause various troubles due to the aging of the skin tissue, and the moisture ability of the skin reduces.



Women Multi Essence

CAPSTAY Multi Essence

For skin surface activation and healthy skin

It is a moisturizing intensive care solution.

It's Balancing Skin Out Care
Ex Reset Water Oil

CAPSTAY MULTI INTENSIVE ESSENCE

HIGH MOISTURIZING

Multi Intensive Boosting Essence

Multi Intensive Rich Essence

[Skin + Lotion + Essence 3 IN 1]

ALL IN 1
THE CARE AT A TIME

PERFECT
IN 3MOISTURIZING



OBVIUS
COVER SKIN&BASIC
CARE CAPSTAY



3 IN 1 CAPSTAY MULTI ESSENCE

Adjust the oil and water balance all at once
Stabilizing and cleansing all at once

A moisturizing intensive care solution for activation of skin surface and healthy skin.

It is a cosmetic that takes care of healthy skin which is focused on skin defect cover by supplying insufficient ingredients to the upper skin surface.

MULTI INTENNSIVE ESSENCE

makes your skin smooth and elastic without stickiness.



• • • TIP

- If you use the night with the fewest changes in the environment during the day, the effect of using cosmetics is increased.
- If you use multi-essence with moderate physical friction such as massaging, it promotes effectiveness.
- After using a steam towel or a sheet mask pack, use a multi-essence to increase the effectiveness..

Women's Multi-Essence



Skin + Lotion + Essence 3 IN 1

Multi essence eliminates the skin lotion step and completes the skin with just one.

Adhesion + Retention + Silkiness

It moisturizes without stickiness to make your skin healthy, radiant and shiny.



Temperature rise + blood circulation enhancement + pore care

It strengthens the veil on the upper layer of the skin and makes it balanced.



Women's Multi-Essence Major Ingredients Effect



BALANCING & CONDITIONING

Jojoba Oil

Excellent sebum control ability and oil and moisture balance
It adjusts and has excellent moisturizing effect.

REVIVE & MOISTURIZING

Rosehip Oil

The rosehip fruit oil, which is 20 times the amount of (vitamin c) of lemon, has excellent skin vitality, trouble relief, and moisturizing effect, and makes the skin smooth and smooth.



MOISTURE & BRIGHTENING

HYALURONICACID

Hyaluronic acid absorbs 1000 times more moisture than its own weight.

It has the properties that it can contain and is very moisturizing.

In addition, it has the effect of rapidly promoting the regeneration of wounds by controlling the function of the skin barrier.

SHOOthing & ELASTINE

OLIVE OIL

It is an oil extracted from olive fruit and has excellent moisturizing effect.

It contains a large amount of vitamin E, making the skin soft

It provides elasticity and is very effective for sensitive skin.

- Sebum trouble relief and pore care
- Strengthen skin surface elasticity and glow effect
- Skin activation and moisturizing effect



Comparison of Women's Multi-Essence Formulations



Add more oil and water balance to the skin with dense concentration



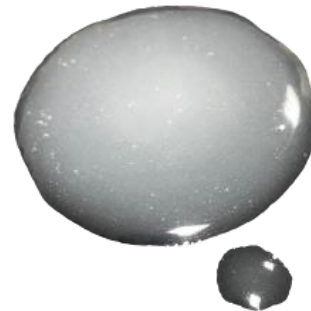
Multi-intensive Boosting Essence viscosity



Moisturizing that last long with smoothness



Add more stability and refinement of skin texture with a dilute concentration.



Multi-intensive Rich Essence viscosity



Moisturizing that gives a rest to the skin with light use

Men's All-In-One Emersion

Rough skin of men
Complete the beauty of men

Just one solution



Men's All-In-One Emersion

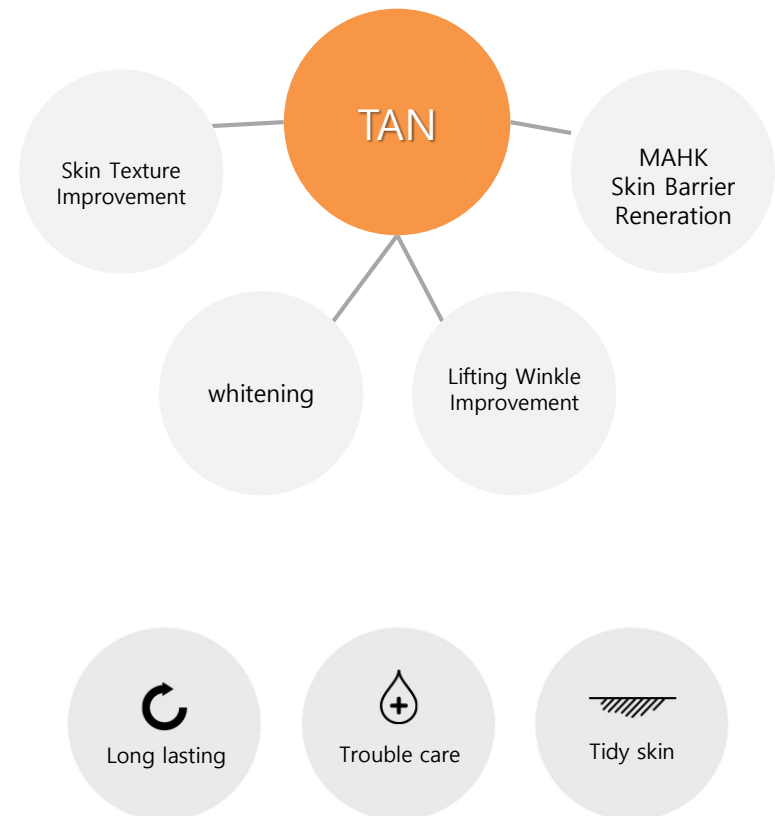
The outer layer of the skin is from harmful substances such as UV rays and pollutants, and the inner layer is from aging and the base of the stratum corneum is not functioning, causing various skin problems.

It is made with the best technology
with good ingredients in one.

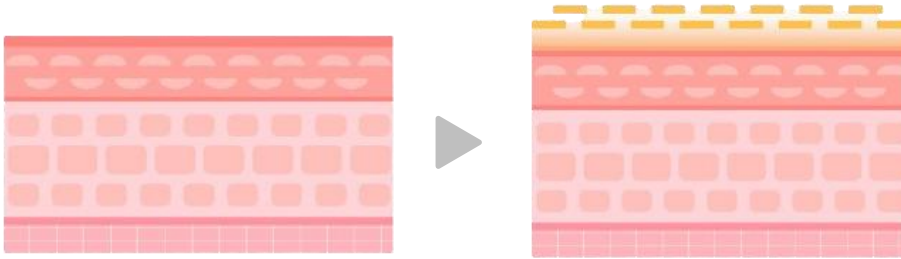
Skin and lotion at once! It has the effect of taking care of skin stability and cleanliness, and it maintains softness and moisture for a long time with the Emersion type of use.

TAN, Skin Regeneration

Not pilling, but generating



Men's All-In-One Emersion



Strengthen Skin Barrier

It strengthens the barrier of the skin, has excellent regenerative and soothing moisturizing effects, prevents oxidation, helps to keep the skin active and shiny, and keeps the skin beautiful and healthy.

Adjusting water and oil balance

For oily skin types, the oil and moisture balance can be adjusted neatly. If the skin feels tight or dry, use it once more on the skin for a longer period of time



Lightness of skin

It gives a break with lightness on your skin. For men who don't prefer a stuffy feeling, it is absorbed lightly and to complete non-sticky skin.



HOMME All-IN-ONE formulation



It is a fresh emersion
formulation that will fill your
health neatly in one.



Moist and refine with
easy use and stable skin.

Women & Men's Product



Women's Multi-intensive Boosting Essence



Women's Multi-intensive Rich Essence



Men's All-In-One Emulsion

All-in-one product ingredients



Women Multi Intensive [Boosting / Rich] Essence

Water, Sodium Hyaluronate, Butylene Glycol, Arginine Rosa Canina Fruit Oil, Simmondsia Chinensis(JoJoba) Seed Oil, Olea Europaea(Olive)Fruit Oil, Glycerin, Propylene Glycol, Petrolatum, Betaine, Dimethicone, Caprylic / Capric Triglyceride, Sorbitan Sesquioleate, 1,2-Hexanediol, Poly sorbate60, Cabomer, Panthenol, Allantoin, Triethanolamine, Hydroxyethylcellulose, Solanum Melongena(Eggplant)Fruit Extract, Hamamelis Virginiana(witch Hazel)Water, Centella Asiatica Extract, Phenoxylethanol, Dipotassium Glycyrrhizate, Disodium EDTA, Punica Granatum Fruit, Extract, Cucumis Sativus(Cucumber)Fruit Extract, Vaccinium Angustifolium(Blueberry)Fruit Extract, Honey Extract, Solanum berosum(potato)Pulp Extract, Panax Ginseng Root Extract, Avena Sativa(Oat) Meal Extract, Undaria Pinnatifida Extract, Arborescens Leaf Extract, Fragrance

HOMME All-IN-ONE Emulsion



Water, Glycerin,Cetyl, Ethylhexanoate, Caprylic/Capric Triglyceride, Niacinamide, Alcohol,PEG-60 Hydrogenated Castor Oil, Methylpropanediol, Carbomer,Arginine, Caprylyl Glycol,Ethylhexylglycerin, Allantoin, Glyceryl Caprate, Hydrogenated Lecithin, Adenosine,Inulin Lauryl Carbamate, Butyrospermum Parkii (Shea) Butter, Butylene Glycol, Macadamia Ternifolia Seed Oil, 1,2-Hexanediol, Sodium Palmitoyl Sarcosinate, Sodium Hyaluronate, Vitex Trifolia Fruit Extract, Urtica Dioica (Nettle) Extract, Thuja Occidentalis Leaf Extract, Simmondsia Chinensis (Jojoba) Seed Extract, Sambucus Nigra Fruit Extract, Persea Gratissima (Avocado) Fruit Extract,Juglans Regia (Walnut) Seed Extract, Hippophae Rhamnoides Fruit Extract, Cnidium Officinale Root Extract, Chrysanthemum Morifolium Flower Extract, Chamomilla Recutita(Matricaria) Flower Extract, Asarum Sieboldii Root Extract, Angelica Dahurica Root Extract, Aloe Barbadensis Leaf Extract, Ulmus Davidiana Root Extract, Pueraria Lobata Root Extract, Pinus Palustris Leaf Extract,Oenothera Biennis(Evening Primrose) Flower Extract, Fragrance,Butylphenyl Methylpropional

All – IN – ONE Essence User's Guide



STEP 1.

After cleansing, use lotion to prepare the skin.



STEP 2.

Apply the essence mask according to the shape of the face except for the eyes and mouth.



STEP 3.

After 15-20 minutes, calm the skin with a moist mask
Apply all-in-one multi essence gently



STEP 4.

Apply once more to your face to get a strong moisturizing feeling with all-in-one essence..

CAPSTAY

Thank you for reading it.

COMPORATE NAME : CHEONGHYU CO.,LTD.

Tel : +8210) 8933 - 2514

E-mail : cheonghyu77@naver.com

Adrees : 66, Chungmin-ro, Songpa-gu, Seoul, Republic of Korea